

Kramer Station

Kramer MetroRail Station is located between Kramer Lane and Braker Lane. It has split stage one platforms (stage two will double the length). This area is in transition, redeveloping from industrial warehouses and utility storage yards, to consumer-oriented uses; shopping, entertainment venues, government offices, and services. The Domain is just west of the station, the JJ Pickle Research Campus to its south, and the IBM Campus is north of the station. East of the station are established low density multi-family apartment complexes and suburban single-family detached residences. It is in the City of Austin's North Burnet/Gateway planning area, which encourages transit-oriented development through generous land use entitlements. High density, mixed use projects are anticipated in the area of the station. The City has built good bikeway connections along Kramer Lane, however intermodal connectivity to surrounding activity centers remains limited.

Station Features...

- Digital real time display
- Shelter/Benches/Destination map/Lighting
- Capital Metro MetroBike Shelter (24 spaces, air)
- 10 Bike racks

System Connections...

- MetroBus 240, 392, 466

Access to...

1. IBM
2. Charles Schwab
3. Austin Energy
4. Topgolf
5. Circle Brewing Co.

Missing Elements...

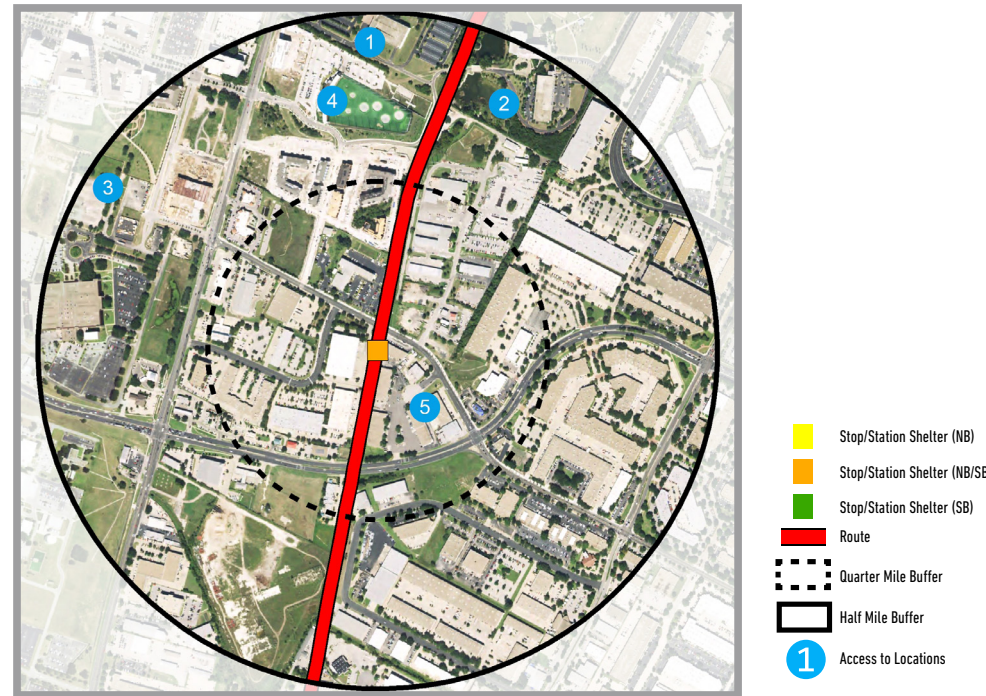
- Mixed-use infill and redevelopment
- Public realm improvements, including shade, street furniture, pedestrian-scale lighting
- Pedestrian and bicycle connections and enhanced crossings
- Street grids or pedestrian/bikeway paths
- Wayfinding



Maps ▾ Photos ▾

Ridership/Service

Weekday Ridership (April 2016)	263 on / 262 off
Saturday Ridership (April 2016)	100 on / 74 off
Sunday Ridership (April 2016)	None
Target Weekday Ridership	1,930 on
Level of Service	30 min peak/60 min off-peak



Demographics

Population (2010)	800
Population (2040)	2,130
Population Density (2010)	1,000 ppl / sq. mile
Employment (2010)	6,420
Employment (2040)	20,190
Employment Density (2010)	8,200 emp / sq. mile
Households (2010)	423
Households (2040)	1,118
Median HH Size (2010)	1.82
Housing Units (2010)	920
Affordable Housing (2013)	0
Median HH Income (2010)	\$46,600
Zero Car HH (2014)	0
Millennial Population Age 25-34 (2010)	550
Senior Population Age 65+ (2010)	40

Kramer Station | MetroRail Red Line 550

FACTS	Segment	North
	Service Open	2010
	Target Weekday Ridership	1,930
Profile Date		2016

PLACE TYPOLOGY	TOD Village
-----------------------	--------------------

READINESS SCORE	Emerging
------------------------	-----------------

READINESS METRICS	Connectivity	Low
	Market Strength	Medium
	Land Availability	Medium
	Government Support	Medium

NEEDS	Safety and security <ul style="list-style-type: none"> ▪ Lighting needed on sidewalks and to illuminate crosswalks ▪ Enhanced safety visibility for pedestrian paths and bicycle routes ▪ "Eyes on the street" can be significantly improved with buildings that open to the station 	(Re)development opportunities <ul style="list-style-type: none"> ▪ Redevelopment opportunities in all quadrants: strip commercial, warehouses appear to be in transition ▪ Redevelopment of publicly-owned property (Austin Energy, etc.), other properties adjacent to station ▪ Infill potential within vacant land areas
	Streetscape improvements <ul style="list-style-type: none"> ▪ Mid-block crossing needed on Kramer Lane to access buses/station with correct ramp placement ▪ Bike/pedestrian connections have gaps ▪ Confusing merge signal; 3 to 4 lane ▪ Pedestrian-scale lighting on sidewalk leading to station and at crossings ▪ Shade trees ▪ Buffer between sidewalk and vehicle lanes ▪ Improved bike access and track crossings ▪ Traffic calming, increasing pedestrian/bike safety at crossing 	Station amenities <ul style="list-style-type: none"> ▪ Shade: trees or other shade from west sun
		Other amenities <ul style="list-style-type: none"> ▪ Continuance of pedestrian/bicycle trail ▪ Wayfinding to note areas within a "10 minute walk"

CATALYST PROJECTS	<ul style="list-style-type: none"> ▪ North Lamar Blvd and Burnet Rd Corridor Improvements (Public Works) ▪ North Service Center Improvements Program (Thru FY16) (Austin Water)
--------------------------	---

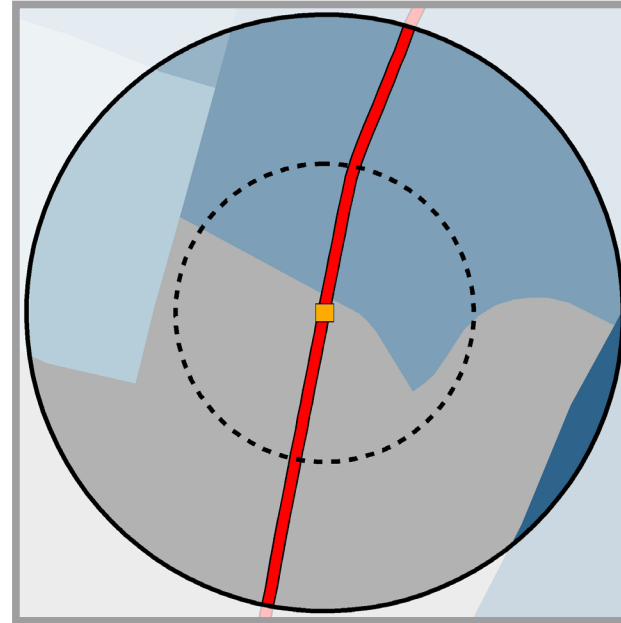
Land Use



The predominant land uses in the 1/2 mile station area include: manufacturing, office, streets and roads, warehousing, and miscellaneous industrial.

- | Land Use | |
|-------------------------|------------------------------|
| Agricultural | Miscellaneous Industrial |
| Apartment/Condo | Mixed Use |
| Aviation/Facilities | Mobile Homes |
| Campgrounds | Office |
| Cemeteries | Parking |
| Commercial | Parks/Greenbelts |
| Common Areas | Preserves |
| Cultural Services | Railroad Facilities |
| Duplexes | Resource Extraction (Mining) |
| Educational | Retirement Housing |
| Golf Courses | Semi-institutional Housing |
| Government Services | Single Family |
| Group Quarters | Streets & Roads |
| Hospitals | Threplex/Fourplex |
| Landfills | Transportation Facilities |
| Large-lot Single Family | Undeveloped |
| Manufacturing | Utilities |
| Marinas | Warehousing |
| Meeting & Assembly | Water |

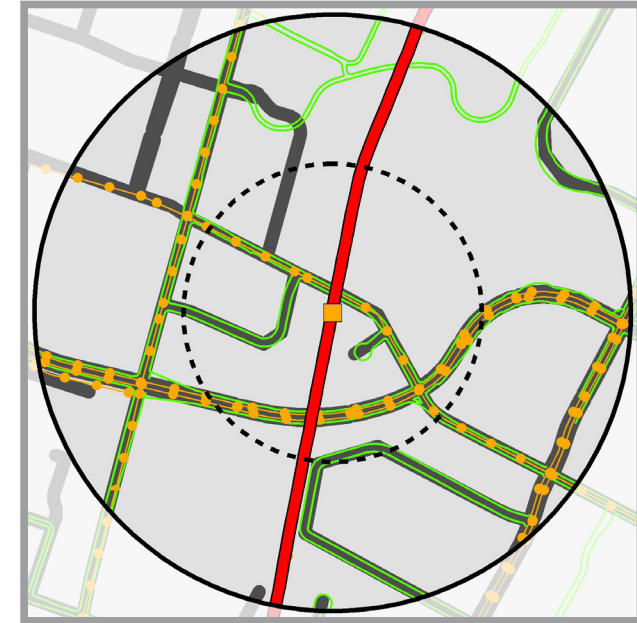
Population Density



Average population density in the 1/2 mile station area is 1,000 residents per square mile.

- | Persons Per SqMi |
|------------------|
| 0 |
| >0 and <1 |
| >1 and <2 |
| >2 and <3 |
| >3 and <4 |
| >4 and <5 |
| >5 and <60 |

Infrastructure-Roads



- Stop/Station Shelter (NB)
- Stop/Station Shelter (NB/SB)
- Stop/Station Shelter (SB)
- Bicycle Path
- MetroRapid Route
- MetroRail Red Line
- Sidewalk
- Street

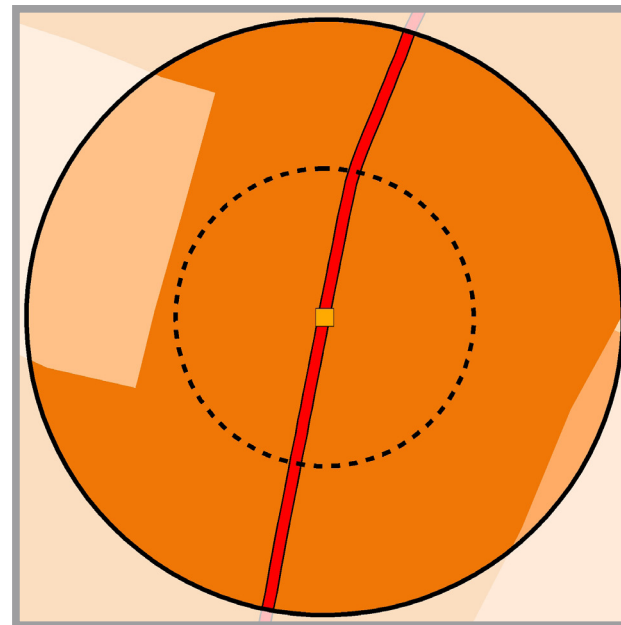
Parcels and Buildings



The 1/2 mile station area is estimated to contain 3.37million built square feet.

- Stop/Station Shelter (NB)
- Stop/Station Shelter (NB/SB)
- Stop/Station Shelter (SB)
- Route
- Quarter Mile Buffer
- Half Mile Buffer

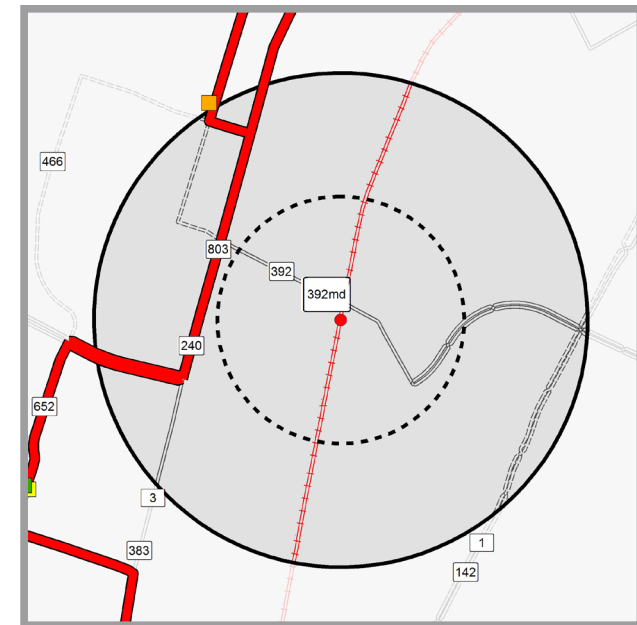
Employment Density



Average employment density in the 1/2 mile station area is 8,200 employees per square mile.

- | Employment Per SqMi |
|---------------------|
| 0 |
| >0 and <1 |
| >1 and <2 |
| >2 and <3 |
| >3 and <4 |
| >4 and <5 |
| >5 and <42 |

Infrastructure-Transit



- Stop/Station Shelter (NB)
- Stop/Station Shelter (NB/SB)
- Stop/Station Shelter (SB)
- Route
- Quarter Mile Buffer
- Half Mile Buffer



Warehouse/showroom lease space on east side of platform



Warehouse/shipping on west side of platform



Looking west, toward the Domain, on Kramer Lane



Austin Energy offices across Kramer Lane from the platform, new apartments to the north with Top Golf



Austin Energy equipment storage across Kramer Lane from station (east side)



Kramer Lane looking east, warehouse/shipping on right, new bikeway (left)