

MLK Jr. Station

MLK Jr. MetroRail Station at the intersection of Alexander Avenue and East 17th Street in central east Austin. The station has a stage one center platform (stage two will double in length), and feeder buses connect riders to University of Texas and the Capitol Complex. This station is the main stop serving the University of Texas and the State Capitol complex. The station is near a collection of non-profit services in the historic Chestnut neighborhood. A mixed-use/multifamily community and retirement village are under construction and a mixed-use creative office development is planned near the station. The area is located close to art galleries, education centers, multi-family residential, rehabilitation centers, restaurants, and entertainment venues. It is surrounded by small lot single-family detached residential, with local schools and churches nearby. Completion of the Upper Boggy Creek Trail is scheduled for 2017. *Imagine Austin* designates this area as a Neighborhood Center; Austin's TOD ordinance defines it as a Neighborhood Center.

Station Features...

- Digital real time information display
- Shelter/Benches/Destination map/Lighting
- Capital Metro MetroBike Shelter (24 spaces, air)
- Free bike racks (8)

System Connections...

- MetroBus 18, 464, 465

Access to...

1. Creative Action
2. PeopleFund
3. M Station Apartments
4. Center 61
5. Sustainable Food Center

Missing Elements...

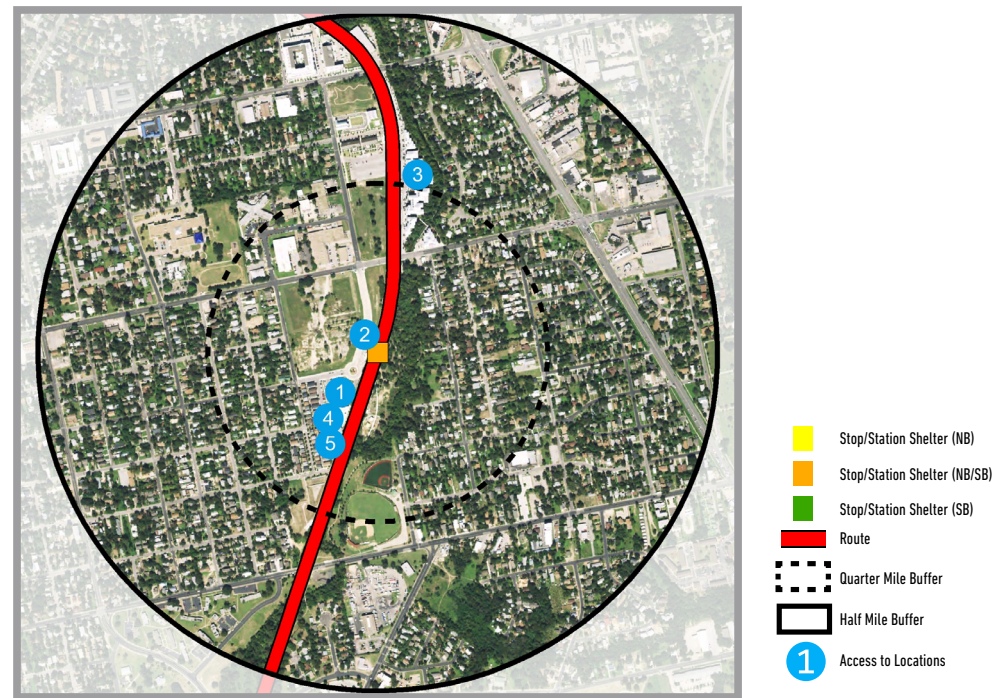
- Shade, pedestrian-scale lighting
- Public realm improvements, including shade, street furniture, and pedestrian-scaled lighting
- Pedestrian and bicycle connections and enhanced crossings
- Wayfinding



Maps ▾ Photos ▾

Ridership/Service

Weekday Ridership (April 2016)	240 on / 272 off
Saturday Ridership (April 2016)	44 on / 43 off
Sunday Ridership (April 2016)	None
Target Weekday Ridership	580 on
Level of Service	30 min peak/60 min off-peak



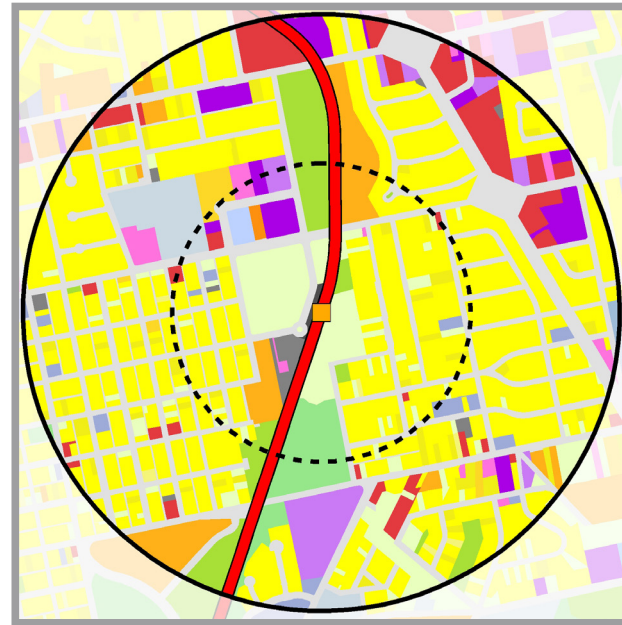
Demographics

Population (2010)	3,550
Population (2040)	8,460
Population Density (2010)	4,500 ppl / sq. mile
Employment (2010)	830
Employment (2040)	2,060
Employment Density (2010)	1,100 emp / sq. mile
Households (2010)	1,562
Households (2040)	3,688
Median HH Size (2010)	2.35
Housing Units (2010)	1,640
Affordable Housing (2013)	199
Median HH Income (2010)	\$37,400
Zero Car HH (2014)	55
Millennial Population Age 25-34 (2010)	920
Senior Population Age 65+ (2010)	480

MLK Jr. Station | MetroRail Red Line 550

FACTS	Segment	Central	
	Service Open	2010	
	Target Weekday Ridership	580	
	Profile Date	2016	
PLACE TYPOLOGY	TOD Village		
READINESS SCORE	Emerging		
READINESS METRICS	Connectivity	Medium	
	Market Strength	Medium	
	Land Availability	Medium	
	Government Support	Medium	
NEEDS	Safety and security	<ul style="list-style-type: none"> ▪ Lighting needed on sidewalks and pavement illumination of crosswalks at MLK Jr. Boulevard ▪ Enhanced safety visibility for pedestrian paths and bicycle routes ▪ Enhancements to bring more "eyes on the street" to the community garden area ▪ More activity at/overlooking the MetroRail platform area ▪ With completion of construction on the west side of Alexander, midblock crossing will be needed 	
	(Re)development opportunities	<ul style="list-style-type: none"> ▪ Redevelopment in north, west quadrants underway indicates potential in the area ▪ Infill potential within vacant properties remain ▪ Housing preservation within the station area 	
	Station amenities	<ul style="list-style-type: none"> ▪ Pedestrian scale lighting ▪ Shade: Trees or shade structure near Alexander Avenue ▪ Street furniture 	
	Other amenities	<ul style="list-style-type: none"> ▪ Continuance of pedestrian/bicycle trail: Upper Boggy Creek Trail in 2017 ▪ Wayfinding to note areas within a "10 minute walk" 	
	Streetscape improvements	<ul style="list-style-type: none"> ▪ Intersection improvements, all ways, to improve safety for all travel modes at Alexander Avenue, MLK Jr. Boulevard ▪ Bike/pedestrian connections ▪ Shade trees along Alexander Avenue ▪ Traffic calming, increasing pedestrian/bike safety at track crossing on MLK Jr. Boulevard 	
	Public/placemaking/art opportunity	<ul style="list-style-type: none"> ▪ Limited placemaking opportunity ▪ Potential for other functional art ▪ Potential for collaboration between private/public interests ▪ Safe design 	
	CATALYST PROJECTS	<ul style="list-style-type: none"> ▪ Austin Heights Neighborhood Water System Upgrades (Austin Water) ▪ Group 21 - Residential and Collector Streets Central East (North) (Public Works) ▪ BOG - MLK-TOD Stormdrain Improvements Phase 1 (Watershed Protection) ▪ MLK Jr. Blvd. Station Area Plan & Regulating Plan (Planning and Zoning) 	

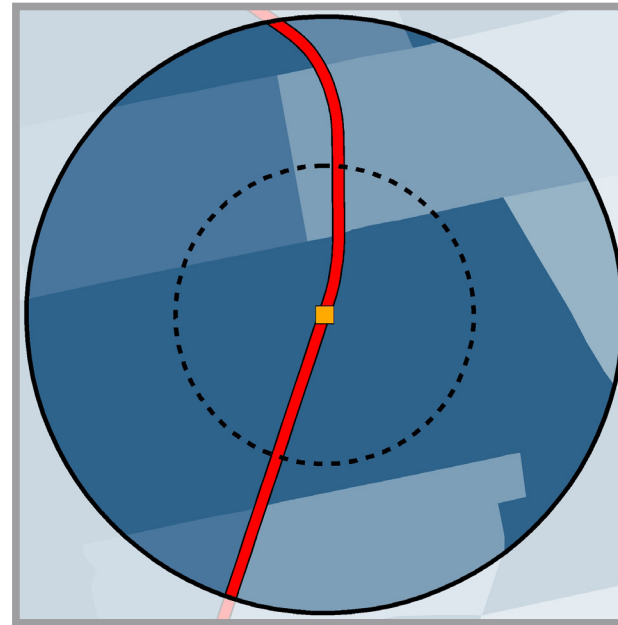
Land Use



The predominant land uses in the 1/2 mile station area include: single family residential, streets and roads, and undeveloped.

- | Land Use | |
|-------------|------------------------------|
| Light Green | Agricultural |
| Orange | Apartment/Condo |
| Dark Grey | Aviation Facilities |
| Light Green | Campgrounds |
| Light Blue | Cemeteries |
| Red | Commercial |
| Light Green | Common Areas |
| Light Blue | Cultural Services |
| Yellow | Duplexes |
| Light Blue | Educational |
| Light Green | Golf Courses |
| Light Blue | Government Services |
| Orange | Group Quarters |
| Dark Blue | Hospitals |
| Dark Purple | Landfills |
| Light Green | Large-lot Single Family |
| Purple | Manufacturing |
| Pink | Marinas |
| Light Blue | Meeting & Assembly |
| Purple | Miscellaneous Industrial |
| Dark Blue | Mixed Use |
| Yellow | Mobile Homes |
| Pink | Office |
| Dark Grey | Parking |
| Light Green | Parks/Greenbelts |
| Light Green | Preserves |
| Dark Grey | Railroad Facilities |
| Light Green | Resource Extraction (Mining) |
| Yellow | Retirement Housing |
| Light Blue | Semi-institutional Housing |
| Yellow | Single Family |
| Light Blue | Streets & Roads |
| Yellow | Threplex/Fourplex |
| Dark Grey | Transportation Facilities |
| Light Green | Undeveloped |
| Light Blue | Utilities |
| Purple | Warehousing |
| Light Blue | Water |

Population Density



Average population density in the 1/2 mile station area is 4,500 residents per square mile.

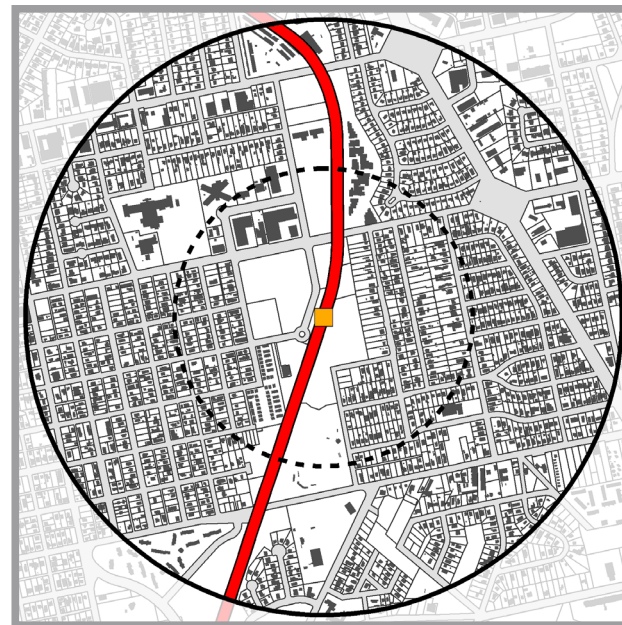
- | Persons Per SqMi | |
|-------------------|------------|
| Lightest Blue | 0 |
| Light Blue | >0 and <1 |
| Medium Light Blue | >1 and <2 |
| Medium Blue | >2 and <3 |
| Dark Blue | >3 and <4 |
| Very Dark Blue | >4 and <5 |
| Darkest Blue | >5 and <60 |

Infrastructure-Roads



- Yellow Square: Stop/Station Shelter (NB)
- Green Square: Stop/Station Shelter (NB/SB)
- Red Square: Stop/Station Shelter (SB)
- Orange Line: Bicycle Path
- Red Line: MetroRapid Route
- Red Line with Dashed: MetroRail Red Line
- Green Line: Sidewalk
- Black Line: Street

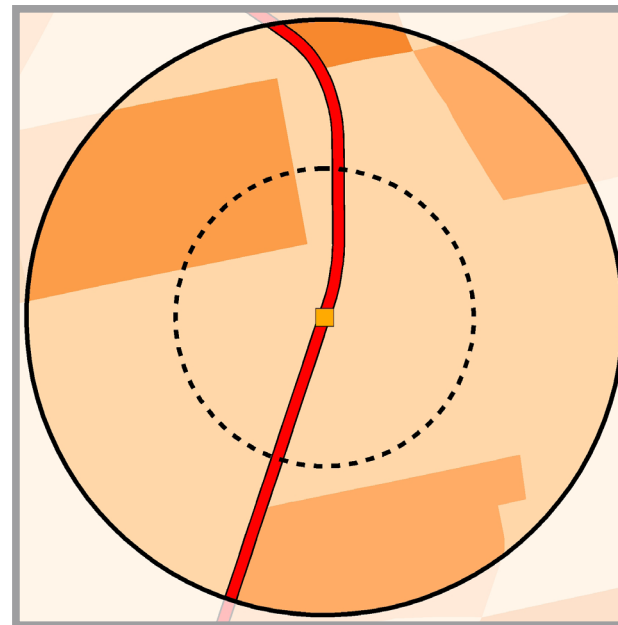
Parcels and Buildings



The 1/2 mile station area is estimated to contain 3.23 million built square feet.

- Yellow Square: Stop/Station Shelter (NB)
- Orange Square: Stop/Station Shelter (NB/SB)
- Green Square: Stop/Station Shelter (SB)
- Red Line: Route
- Dashed Circle: Quarter Mile Buffer
- Solid Circle: Half Mile Buffer

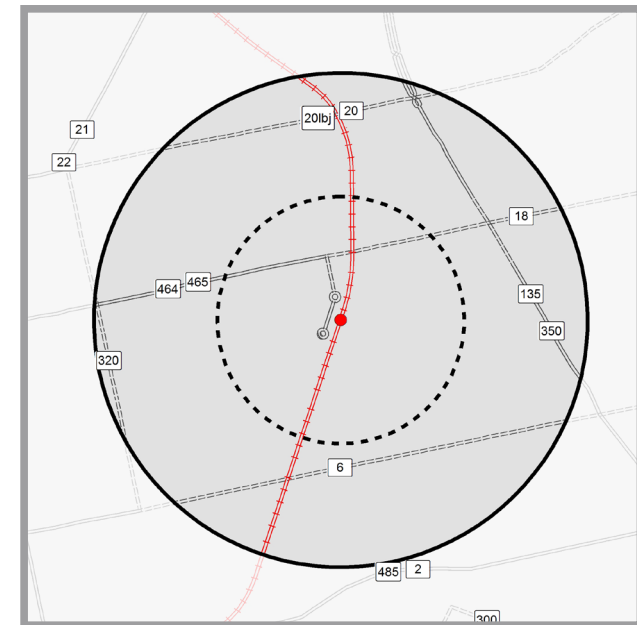
Employment Density



Average employment density in the 1/2 mile station area is 1,100 employees per square mile.

- | Employment Per SqMi | |
|---------------------|------------|
| Lightest Orange | 0 |
| Light Orange | >0 and <1 |
| Medium Light Orange | >1 and <2 |
| Medium Orange | >2 and <3 |
| Dark Orange | >3 and <4 |
| Very Dark Orange | >4 and <5 |
| Darkest Orange | >5 and <42 |

Infrastructure-Transit



- Yellow Square: Stop/Station Shelter (NB)
- Orange Square: Stop/Station Shelter (NB/SB)
- Green Square: Stop/Station Shelter (SB)
- Red Line: Route
- Dashed Circle: Quarter Mile Buffer
- Solid Circle: Half Mile Buffer



MLK Jr MetroRail Station is home to a variety of non-profit businesses and services, including PeopleFund, Chestnut Commons is pictured on the left



Roundabout at MLK Jr. Station with PeopleFund and Chestnut Commons



Mixed-use development, townhomes, and senior living is under construction on Alexander Street, 17th Street, and MLK Jr Boulevard at the station



M Station is an affordable housing community that includes day care, training, and more



Established and new detached single-family residences within a 1/2 mile walk



The Sustainable Food Center includes a community garden on Upper Boggy Creek Trail at the station, which continues north to the Mueller Development