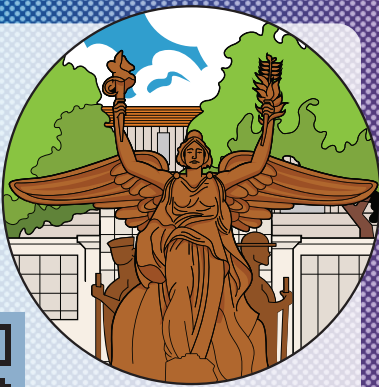


# RIDING BASICS

## KEEP YOUR CHANGE

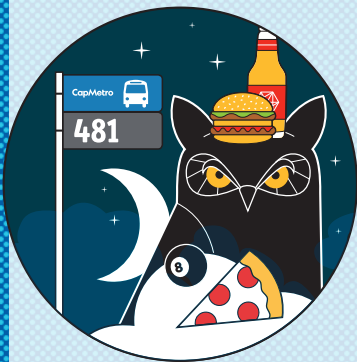
Your school ID is all you need - most services are FREE with your UT ID. Swipe your ID at the fare box and take a seat.

MORE INFO AT  
CAPMETRO.ORG/UT



## IT'S ALL YOURS

Riding CapMetro for free allows you to spend your money on enjoying life both on and off campus. Our range of services includes UT shuttles, buses, rail, on-demand rideshare and more! Unlock what Austin has to offer like inspiring study spots, new restaurants, concerts, downtown internships and beyond.



## WHENEVER YOU NEED US

Up late "studying"? CapMetro Rapid and Rail run till midnight on Fridays and Saturdays, and Night Owl routes till 3 a.m. Monday to Saturday.

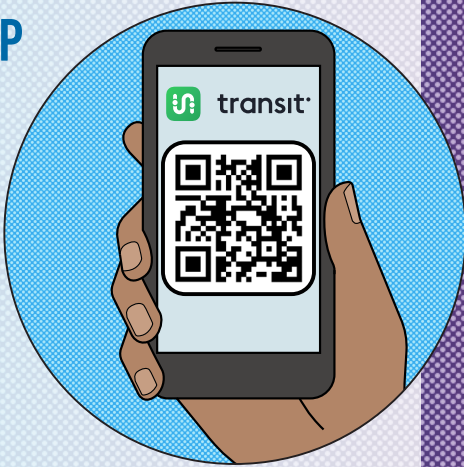
## HOW TO PLAN YOUR TRIP

Download the Transit app or visit capmetro.org to plan your trip. It's easy to ride CapMetro with these on-the-go travel tools:

- Trip Planner
- Real-time location tracking with GO
- Schedules & Maps
- Service Alerts

Start by entering your destination, an intersection (like 2nd/Congress) or a Stop ID, and you're ready to freely move about Austin.

And don't forget to sign up for CapMetro Alerts to receive service notifications about your specific bus route: [capmetro.org/alerts](https://capmetro.org/alerts)



CapMetro  
512.474.1200 | capmetro.org

# TOP 20

## PLACES TO GO, THINGS TO SEE & STUFF TO DO ON CAPMETRO

Spring/  
Summer  
2025



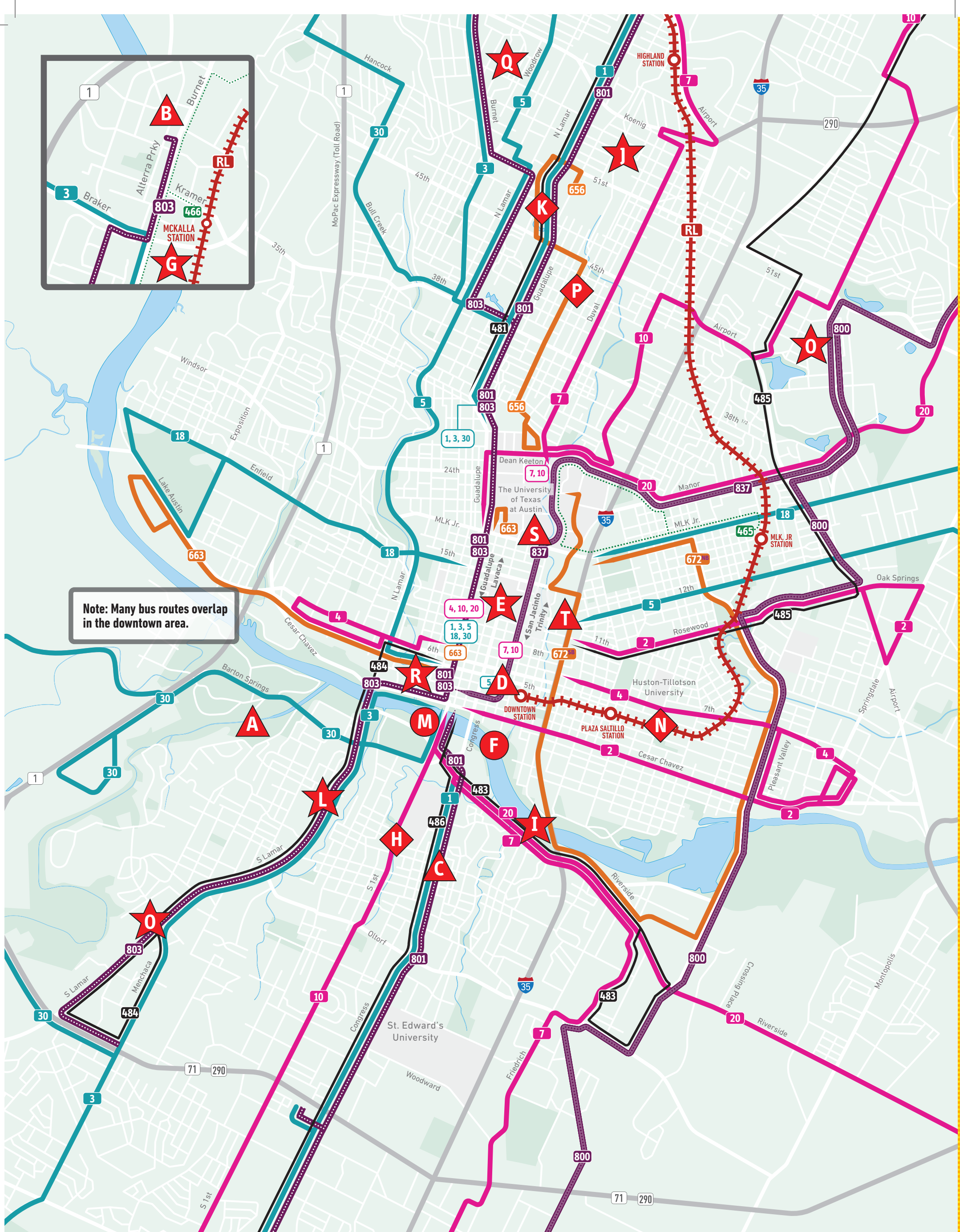
## ROUTES TO POPULAR SPOTS

<b>A</b> Barton Springs 30	<b>K</b> The Triangle 1 656 801
<b>B</b> The Domain 3 466 803	<b>L</b> Lamar Union 3 803
<b>C</b> SoCo 1 801	<b>M</b> Auditorium Shores & the Long Center 1 7 10 20 30 801
<b>D</b> 6th Street 1 2 3 4 5 7 10 20 30 801 803 837 RL	<b>N</b> Eastside Eats 2 4 672 RL
<b>E</b> State Capitol 1 3 5 7 10 20 30 663 801 803 837	<b>O</b> Honky-Tonk Dancing on South Lamar 3 300 803
<b>F</b> Bats Under the Congress Ave Bridge 1 7 20 801	<b>P</b> Hyde Park Hangouts 1 7 656 801
<b>G</b> Q2 Stadium Austin FC 3 466 803 RL	<b>Q</b> Burnet Road Thrifting 3 803
<b>H</b> S. 1st Street Food Trailers 10	<b>R</b> Central Library 3 803
<b>I</b> Boardwalk Trail & Paddle Boarding at Ladybird Lake 7 20	<b>S</b> Darrell K Royal Stadium 7 10 18 837
<b>J</b> North Loop 1 7	<b>T</b> Waterloo Park & Moody Amphitheater 5 7 10 103 111 142 171 837

**RL** CapMetro Rail Red Line **600s** UT Shuttle Routes

Operate on the UT academic calendar schedule. Check hours of operation: [capmetro.org/ut-shuttles](https://capmetro.org/ut-shuttles)





- High-Frequency**  
Every 15 minutes on weekdays, every 15-30 minutes on weekends
- Bus**  
Routes from all over the city, along major streets including UT & downtown
- UT Shuttles**  
Shuttle service linking University of Texas main campus to outlying residential areas

- Rapid**  
Every 10-15-minutes during the day, and 20-minutes in the evening
- Introductory Rapid**  
Every 20 minutes during the day, every 30 minutes during the evening
- Night Owls**  
Service operates year-round from midnight until 3 a.m., Monday - Saturday

- Rail**  
Train service between Leander & downtown Austin. See schedule for specific times
- Rail Connector**  
Ride the train, then bus to major employers, shopping & education destinations

- Austin Essentials**
- Food & Bevs**
- Fun-tivities!**
- Events**

\* This map does not fully show the entirety of CapMetro's routes, please see our system map for more connections.